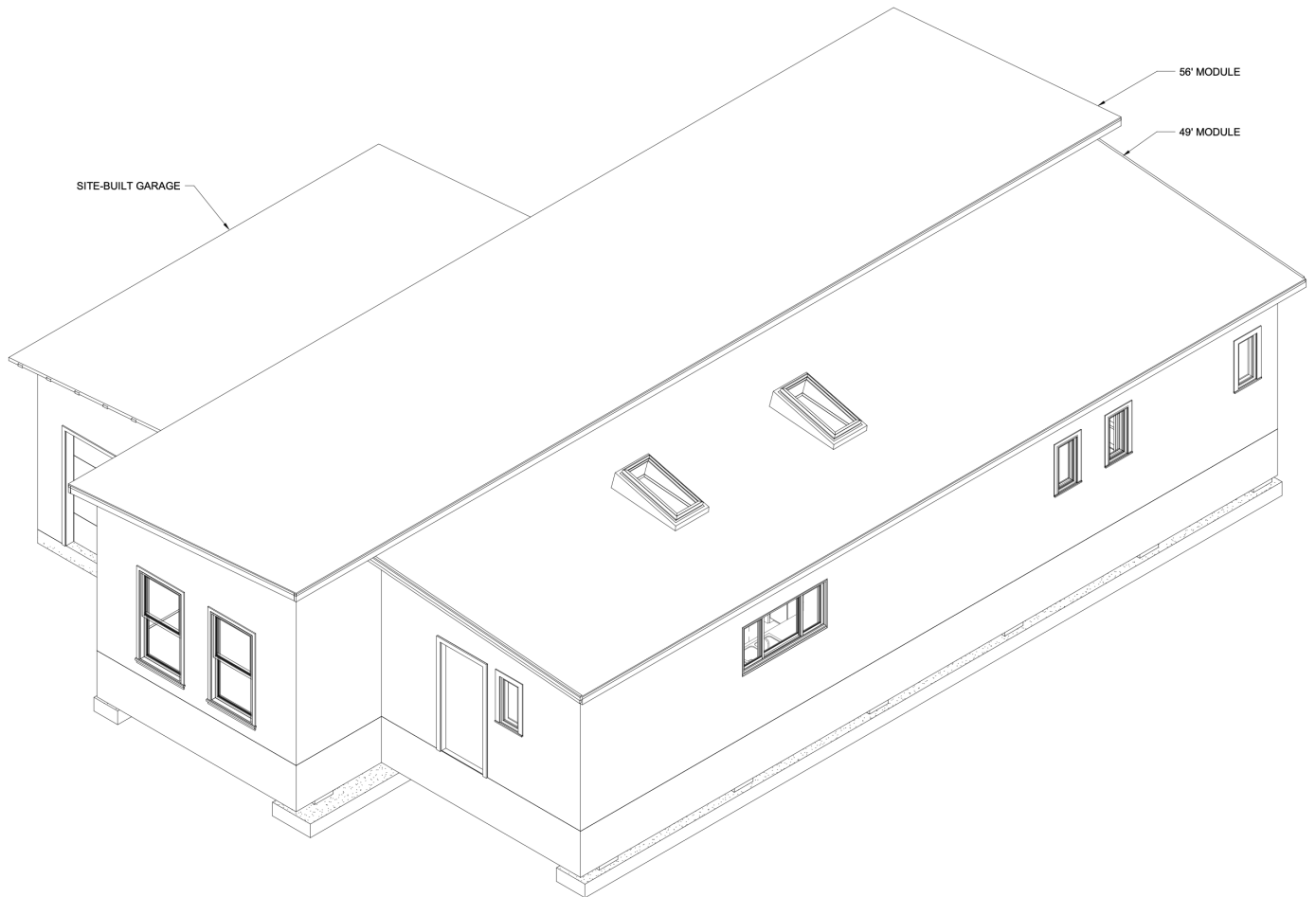




WOODLAND CRAFTED HOMES



MONARCH XL

3-Bed, 2-Bath 1,470 Sq. Ft.



MONARCH butterflies travel over 3200km annually to migrate from Canada to Mexico. Be sure to keep your eye out for this beautiful creature on your next trip to Southern BC.

This is not an offering for sale. Such an offering can only be made with a Disclosure Statement. E&OE. The developer reserves the right to make modifications to building design, specification, features and floorplans. All illustrations and renderings are artistic representations only and are subject to change.

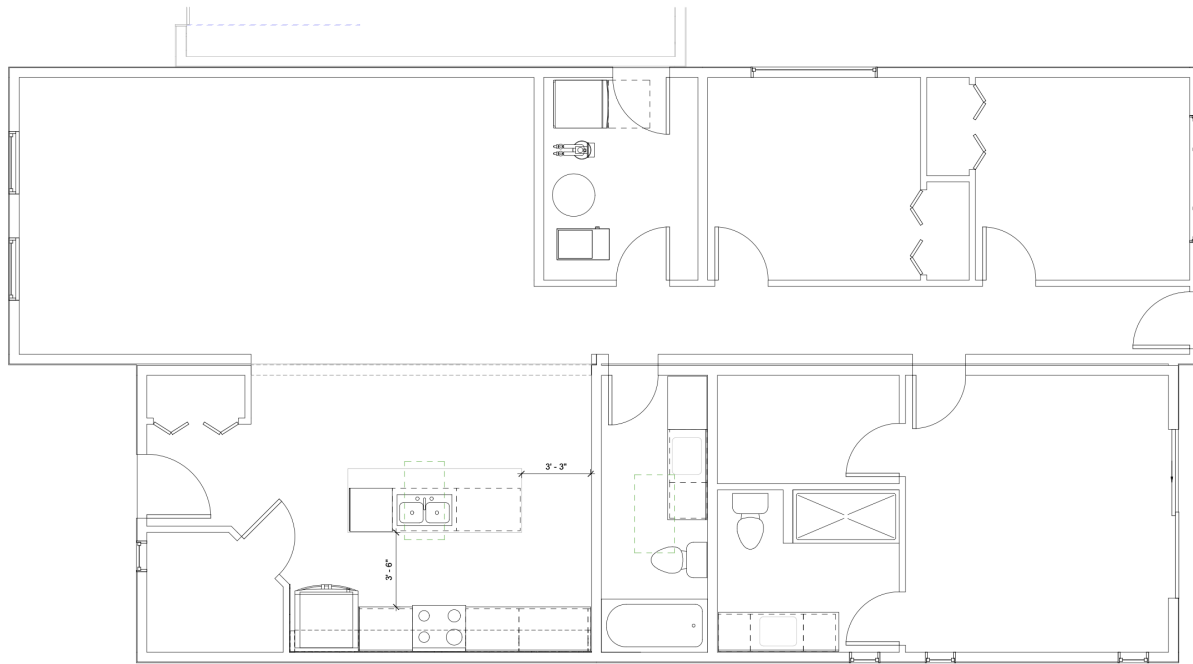
MONARCH XL

3-Bed, 2-Bath | 1,470 Sq. Ft.

Starting at \$473,800

The Monarch XL is a luxurious and spacious new model built by Woodland Crafted Homes. Entering the house, you and your guests are greeted by an open concept Kitchen that crosses seamlessly into the Dining Room and Living Room. The addition of a skylight over the kitchen sink brings in an abundance of natural light. With the bedrooms located toward the back of the house, and the living room in the front, there are separate spaces for relaxing and entertaining. Your master bedroom in the XL comes standard with a patio door giving easy access to your backyard or upgraded deck.

The additional space in the Ensuite with an extended shower has been an area of interest for new homeowners. The main bathroom also features a skylight and is 37% larger compared to the Monarch. This layout has been awaited by many, and is anticipated to be a top seller.



MONARCH XL FEATURES

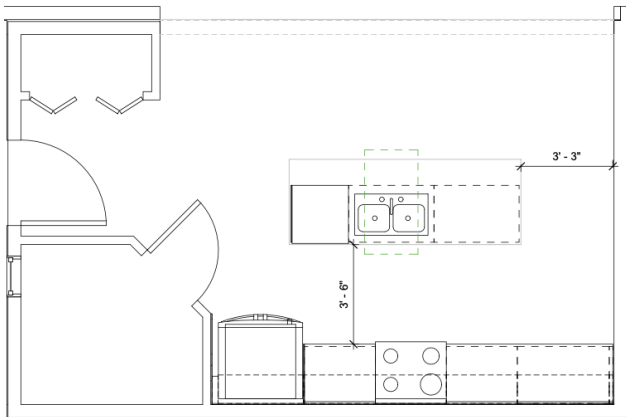
- Additional 98 sqft of optimized living space
- 35.4% Larger Main bathroom with built in linen closet
- 38.2% Larger Ensuite and extended shower
- 36.7% Larger Living Room area
- 15.0% Larger Mechanical Room to improve use as a mud room from the garage entry
- 22.2% Longer Driveway, extended by 4 feet with garage position moving toward the back of the home
- 2 Large skylights located in the Kitchen and Main Bathroom
- Patio door in the Master Bedroom with access to the backyard
- Grand front entrance with wide front door canopy featuring cedar posts on either side

KITCHEN EXPANSION

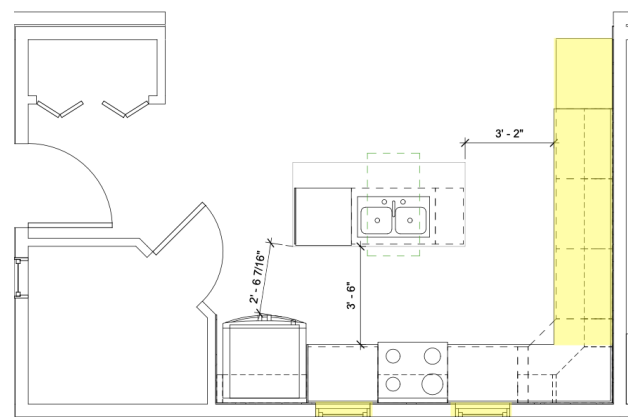
Expand and brighten your family's central hub, the kitchen. The heart of the house deserves to be a place that fits your daily needs.

\$11,600

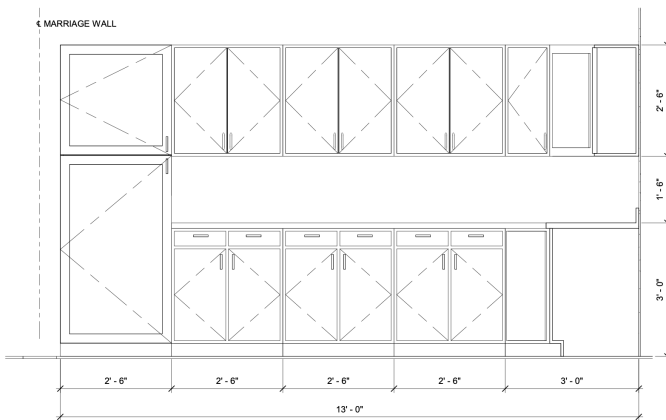
* Estimated pricing



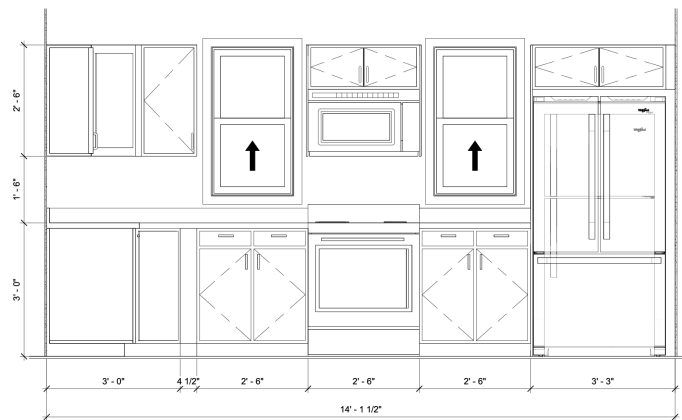
Standard Kitchen



Expanded Kitchen



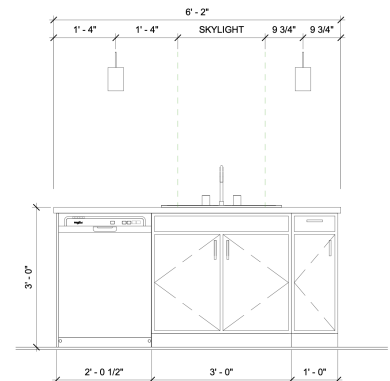
MN/MNXL UPGR. KITCHEN - WALL B
SCALE: 1" = 1'-0"



MN/MNXL UPGR. KITCHEN - WALL A
SCALE: 1" = 1'-0"

FEATURES

- Additional 11 feet of upper and lower cabinets on kitchen side wall
- 2 windows located on either side of the range exclusive to the kitchen expansion package
- Only available for Monarch, Monarch XL and Coho Models
- Final cabinet and drawer layout to be included in sales contract



MN/MNXL UPGR. KITCHEN - ISLAND
SCALE: 1" = 1'-0"